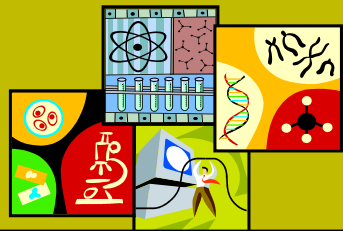




University Research Core Facility Management

Paula Turpen, PhD
Director, Research Resources
University of Nebraska Medical Center



NCURA Region IV

April 27, 2010



University of Nebraska Medical Center

What is a Shared Resource or Core Facility?

Specialized

1. Technology
2. Services
3. Expertise

Access

1. Unrestricted



Advantages to Researchers

Equipment

1. Sophisticated
2. Expensive

Highly Trained Personnel

1. Theory
2. Practice
3. Development



Advantages to Researchers

Improved

1. Stability
2. Reliability
3. Quality Control
4. Cost Effectiveness



Quality Service at a Reasonable Cost



Challenges

Access

1. How to find services
 - Location
 - Point of Contact
 - Type of Service
2. How to schedule services
 - Availability
 - Sample Preparation Requirements
 - Cost

GENOMICS RESOURCES			
EXPERTISE / SUPPORT	LOCATION	RESOURCE CONTACT	FACILITY (webpage)
Cytogenetics	MMI	Warren G. Sanger, Ph.D., FACMG	Clinical Cytogenetic or FISH Studies
DNA Methylation	DRC II	David Klinkenberg, PhD	DNA methylation Core Facility
DNA Sequencing	Eppley Institute	David Kelly, PhD	UNMC Eppley Molecular Biology Core
	DRC II	James Eudy, PhD	High-Throughput DNA Sequencing and Genotyping
DNA transfection	Eppley Institute	David Kelly, PhD	UNMC Eppley Molecular Biology Core
FISH (fluorescence in situ hybridization) Studies	MMI	Warren G. Sanger, Ph.D., FACMG	Clinical Cytogenetic or FISH Studies
Gene Targeting via transgenic and knockout animals, strain rederivation	DRC II	Kay-Uwe Wagner, PhD	Mouse Genome Engineering Core Facility
Genotyping	DRC II	James Eudy, PhD	High-Throughput DNA Sequencing and Genotyping
Microarray	DRC II	James Eudy, PhD	Micro array Core Facility
	Eppley Institute	David Kelly, PhD	UNMC Eppley Molecular Biology Core
Molecular genetics	MMI	Warren G. Sanger, Ph.D., FACMG	Human Genetics Laboratory
Oligonucleotide Synthesis	Eppley Institute	David Kelly, PhD	UNMC Eppley Molecular Biology Core
**siRNA	Eppley Institute	David Kelly, PhD	Eppley Molecular Biology Core
SNP (Single Nucleotide Polymorphism) Analysis	DRC II	Tricia LeVan, PhD	Targeted SNP Analysis
PROTEOMICS AND SYSTEMS BIOLOGY RESOURCES			
EXPERTISE / SUPPORT	LOCATION	RESOURCE CONTACT	FACILITY
Atomic force microscopy	COP	Yuri Lyubchenko, PhD	Nanoimaging Core Facility
Crystallography	LTC	Gloria Borgstahl-Kramer, PhD	Nebraska Center for Structural Biology
Mass Spectrometry	DRC	Pawel Ciborowski, PhD	Mass Spectrometry and Proteomics Core Facility (MSPCF)
Monoclonal antibody production	DRC	Donald R. Johnson, PhD	Monoclonal Antibody Facility
NMR	Eppley Institute	Guangshun Wang, PhD	Nuclear Magnetic Resonance Core Facility
Protein structure sequencing	DRC	Laurey Steinke, PhD	Protein Structure Core Facility
Target-ligand interactions	DRC	Donald R. Johnson, PhD	Molecular Interaction Core Facility
CELL AND TISSUE ANALYSIS			
EXPERTISE / SUPPORT	LOCATION	RESOURCE CONTACT	FACILITY
Tissue Sciences: histology, histochemistry,	Eppley Institute	Wina Chung (John), Chan, MD	Tissue Sciences Facility
Electron Microscopy/Confocal Microscopy/Virtual Microscopy	WH	Gordon Todd, PhD	Virtual Microscopy and Imaging Core Facility
	DRC	Judith Christman, PhD	Confocal Laser Scanning Microscope Core Facility

Centralized Directory



Core Facility Day

Vermont Genetics Network
A Network of Genetically-Informed Research

[ABOUT VGN](#) | [FUNDING](#) | [CORE FACILITIES](#) | [OUTREACH](#) | [GO](#)

[VGN Home](#)
[Funding](#)
[Funding Opportunities](#)
[VGN Funded Researchers](#)
[VGN Mailing List](#)
[Facilities & Cores](#)
[Bioinformatics Core](#)
[Bioscience Facility](#)
[Proteomics Facility](#)
[Outreach](#)
[VGN Core Facilities Database](#)
[Search](#)
[Add a Core Facility](#)
[Edit a Core Facility](#)
[Export to Excel](#)
[Map the Cores!](#)
[About](#)
[Core Facility Database Home](#)
[NGL: Network of Genetically-Informed Research](#)
[Laboratories](#)
[VGN](#)
[Information for Researchers](#)
[How to cite VGN Funded Research](#)
[Download the VGN Logo for use in presentations](#)
[VGN Information](#)
[About](#)
[Add yourself to the Newsletter List](#)
[VGN in the News](#)
[Funding & Statistics](#)

Searchable Core Facilities Database

Find Core Facilities in your Region!

Search on any/all of these fields:
Results will appear below the search boxes.

State / Province:

Country:

Service:

Association:

Phrase:

[Search!](#)

Your results for:
Facilities in Nebraska

[Map your Results!](#)


Services offered:

Assays and Measurements
Cell Sorting
Data Analysis
DNA Analysis

The UNMC Cell Analysis Facility provides flow cytometry services to investigators on and off the UNMC campus on a fee for service basis. Services include:
-immunophenotyping
-cell cycle and DNA content analysis
-combination expression and heat based multicolor analysis for signal

Cell Analysis Facility (flow cytometry)
University of Nebraska Medical Center

National Registries



**The Association
of Biomolecular
Resource Facilities**

Research • Technology
Communication • Education



[Home](#)
[ABRF Sponsors](#)
[Contact Us](#)
[Help](#)
[Log](#)


[Journal of Biomolecular Techniques](#) |
 [Discussion Forum](#) |
 [White Pages](#) |
 [Yellow Pages](#) |
 [Join ABRF](#)

[Advanced Search](#)

[ABRF Home](#)
[Visit ABRF](#)
[About ABRF](#)
[ABRF 2019 Meeting](#)
[Open Research Studies](#)
[Committees](#)
[Forms and Documents](#)
[ABRF Awards](#)
[References](#)
[Communications](#)
[News & Announcements](#)
[Who's Who in Facilities](#)
[Job openings](#)
[Sponsors](#)
[Help Section](#)

Featured Sponsors



Support Our Sponsors!

ABRF Yellow Pages Search

The ABRF Yellow Pages is a list of laboratories that offer commercial analytical services. Use any, all, or none of the criteria below to narrow your search. Leave all criteria fields blank to view the complete list. Be sure to specify your desired sort method and number of listings to display per result page.

Lab Name:

City: State/Region: Country:

* These choices reflect only the actual locations of ABRF members.

Sort Results: Max. results:

Services:

Standard Services:

Protein/Peptide Chem

- ☐ Amino Acid Analysis
- ☐ C-terminal Sequencing
- ☐ Edman Sequencing
- ☐ Peptide Synthesis
- ☐ Peptide/Protein Arrays
- ☐ Post-translational Modifications
- ☐ Proteomics

Antisense

- ☐ High throughput Screening
- ☐ LIMS
- ☐ Robotics

Physical Chemistry

- ☐ Calorimetry
- ☐ Light Scattering
- ☐ Micro Arrays

Nucleic Acid Chem

- ☐ DNA Sequencing
- ☐ DNA Synthesis
- ☐ Gene Array
- ☐ Genotyping
- ☐ Real Time PCR
- ☐ RNA Synthesis
- ☐ Template Preparation

QC

- ☐ GLP
- ☐ GMP
- ☐ Quality & Compliance

Mass spectrometry

- ☐ ICAT
- ☐ MS-Carbohydrates

Association Directories

UNMC TODAY
UNMC'S INTRANET

[Resources for: Students](#) |
 [Faculty & Staff](#) |
 [Alumni](#)

[Employee Resources](#)
[Employee Perks](#)
[Wellness](#)
[Jobs @](#)
[IT Help](#)

[Home > News](#)

News

News

[UNMC in the News](#)

[Blogs](#)

[Archives](#)

[Classifieds](#)

[Announcements](#)

[Reward & Recognition](#)

[Contact Us](#)

today

[Printable Version](#)


[Share](#)

Core Facility Focus on the Mouse Genome Engineering Core Lab

The Mouse Genome Engineering Core Lab is one of several Core facilities available for use by UNMC researchers.

Core facilities, sometimes called shared resources, provide sophisticated, expensive technology and expertise that no single lab would have the financial resources to purchase and learn.

These fee-for-service resources help investigators maximize productivity by providing access to



Blastocyst injections such as the one illustrated in this photo are among the procedures done in the Mouse Genome Engineering Core Lab.

News Stories



Challenges

Federal Policies and Requirements

1. NIH

- Access restricted by Institute funding
- Requirement for stand-alone core centers (P01, P30, P20- COBRE)
- Lack of :
 - Incentives to promote use
 - Standardized policies on funding personnel salary and setting rates
 - Standardized reporting



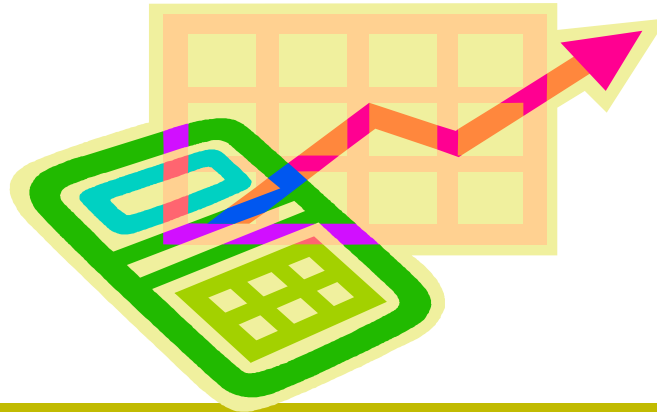
Challenges

Federal Policies and Requirements

2. OMB Circular A-21

- No depreciation on federally-funded high end equipment
- Inability to make a profit or develop capital reserve
- Lack of standardized interpretation of circular A-21





Increase:

- Allowable rates for the cost of administration
- Maximum annual activity that defines a specialized service center



Allow capital equipment purchases to be charged directly to core operating fund



NRI-FUNDED RESEARCH CORE FACILITY EVALUATION AND BUDGET PROJECTION

Facility Name

Year Established

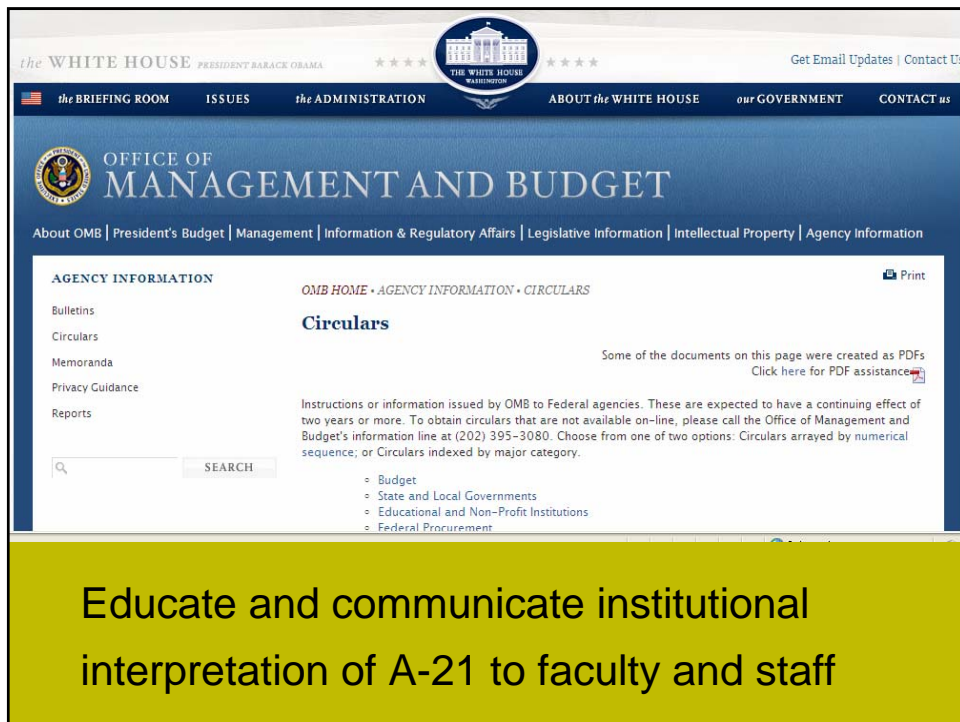
FINANCIAL	May 1, 2008-April 30, 2009	July 1, 2009 - June 30, 2010
Budget	2008-2009	2009-2010
Income	(Actual)	(Projected)
User Fees Internal		
User Fees External		
NRI		
Grants (list individually)		
Contracts (list individually)		
Prepayment/Contract		
Revenue Account Balance		
Total		
Expenses	(Actual)	(Projected)
total FTE's		
personnel		
salary (for each person)		
benefits (for each person)		
cost share	Not allowed with NRI funds	Not allowed with NRI funds
operations		
supplies		
service contracts		
capital outlay		
prepayment use		
Total		

Reporting Requirements - Financial



PRODUCTIVITY	Year to Date	Projected
Use		
# users		
internal (on campus)		
external (off campus)		
# units of use		
# use units/user		
FTE/unit of use		
User Fee (\$\$\$/unit of use)		
annual capacity		
(prepay capacity reduction)		
(privileged capacity reduction)		
net annual capacity		
Billing		
total use billed (\$)		
use collected (\$)		
use not collected (\$)		reason not collected
Funding of Users		
# users		
Federally funded		
Non-federally funded		
Corporate funded		
Resulting Publications		
Resulting Patents		

Reporting Requirements - Productivity



the WHITE HOUSE PRESIDENT BARACK OBAMA

the BRIEFING ROOM ISSUES the ADMINISTRATION ABOUT the WHITE HOUSE our GOVERNMENT CONTACT us

OFFICE OF MANAGEMENT AND BUDGET

About OMB | President's Budget | Management | Information & Regulatory Affairs | Legislative Information | Intellectual Property | Agency Information

AGENCY INFORMATION

Bulletins
Circulars
Memoranda
Privacy Guidance
Reports

OMB HOME • AGENCY INFORMATION • CIRCULARS

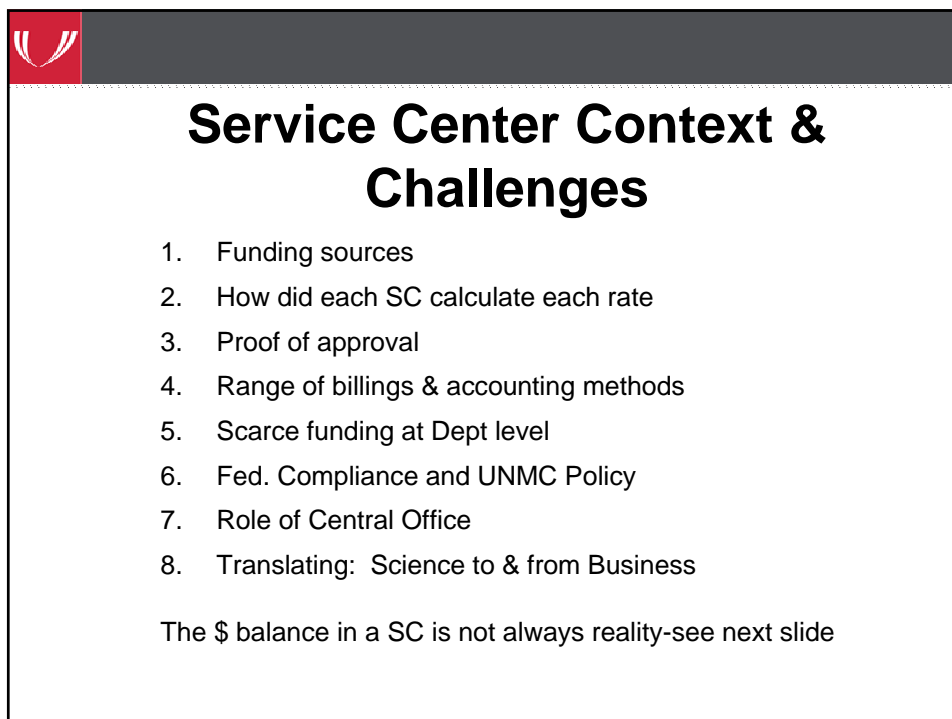
Circulars

Some of the documents on this page were created as PDFs
Click here for PDF assistance

Instructions or information issued by OMB to Federal agencies. These are expected to have a continuing effect of two years or more. To obtain circulars that are not available on-line, please call the Office of Management and Budget's information line at (202) 395-3080. Choose from one of two options: Circulars arrayed by numerical sequence; or Circulars indexed by major category.

- Budget
- State and Local Governments
- Educational and Non-Profit Institutions
- Federal Procurement

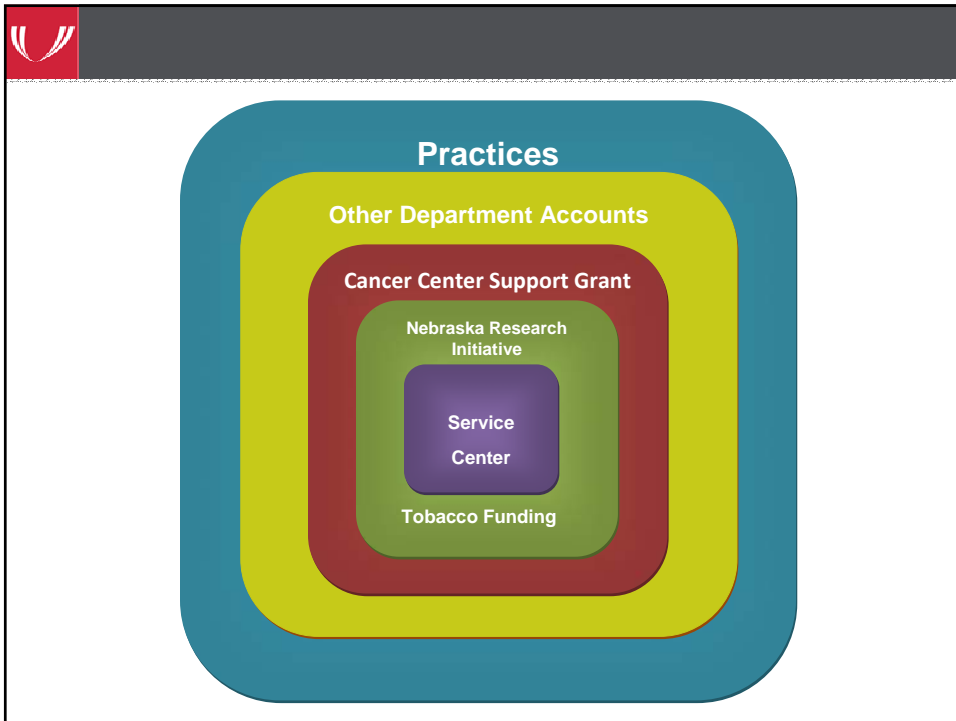
Educate and communicate institutional interpretation of A-21 to faculty and staff



Service Center Context & Challenges

1. Funding sources
2. How did each SC calculate each rate
3. Proof of approval
4. Range of billings & accounting methods
5. Scarce funding at Dept level
6. Fed. Compliance and UNMC Policy
7. Role of Central Office
8. Translating: Science to & from Business

The \$ balance in a SC is not always reality-see next slide



UNMC Service Center Improvement Plan

- ✓ If Federal charges > **\$10,000**
all rates will be reviewed and approved by FCC
Office & Office of Research (when Core labs)
- ✓ Education classes on rate setting & practices
- ✓ Policy to be updated
- ✓ Monitoring & reporting



Challenges

Personnel Training

1. Resource Scientists

- No well-defined career path or funding
- No training that would lead to certification for core directors
- No designated entity to provide certification

The screenshot displays two web pages side-by-side. The left page is the ISAC (International Society for Advancement of Cytometry) website, featuring a blue header with the ISAC logo and navigation links. The right page is the ALMA (Association of Laboratory Managers) website, featuring a yellow header with the ALMA logo and navigation links. Both pages contain text about their respective organizations and upcoming events.

ISAC Website Content:

- Header:** ISAC International Society for Advancement of Cytometry
- Navigation:** Home, About ISAC, Join ISAC, CYTO 2010, News, Conferences, Publications, Research Areas, Presentations/Lectures, Videos.
- Core Managers - Organization:** Approaches to managing a cytometry facility vary widely depending on many factors that can be unique to a particular environment. The Laboratory has to align itself with the general management structure and ethos to meet the needs of the users and the goals of the host institution. There are many levels of interaction with end-users, line managers, upper management, vendors and others, all of which need to be approached in different ways. Additionally, the facility may need to produce independent research and would certainly need to show that it was 'productive'.
- Core Managers - Organization (List):**
 - Levels (2 items)
 - Management (6 items)
 - Getting started (4 items)
 - Measuring output (6 items)
- ABRF 2010:** March 20-23, 2010, Sacramento Convention Center, Sacramento, California.
- Managing Performance and Productivity in the Laboratory:** Agilent Technologies.
- Organizers:** Wayne Collins, Agilent, Inc.
- Presenters:** Wayne Collins, Agilent, Inc.
- Short Name:** Laboratory Management

ALMA Website Content:

- Header:** Association of Laboratory Managers
- Navigation:** home, about, events, resources, membership, contact.
- Welcome to ALMA:** The Association of Lab Managers (ALMA) benefits managers of laboratories in industry, government, and universities all over the world.
- ALMA's unique strength:** lies in providing a forum for managers to interact with other managers who have similar problems and who are willing to share solutions and ideas that have worked in their laboratories.
- Participation in ALMA:** helps laboratory managers develop better management skills and practices. ALMA contributes to improved lab performance/customer satisfaction by promoting discussion of practices and programs relating to quality, cost control, and employee development.
- Get Involved with ALMA Today**

Scientific Societies and Meetings

UNIVERSITY OF NEBRASKA
MEDICAL CENTER

[About Us](#)
[Education](#)
[Research](#)
[Outreach](#)
[Patient Care](#)
[News & Events](#)

[HOME](#)
[ABOUT HHMI](#)
[PRESS ROOM](#)
[EMPLOYMENT](#)
[CONTACT](#)

[HHMI NEWS](#)
[SCIENTISTS & RESEARCH](#)
[JANELIA FARM](#)
[SCIENCE EDUCATION](#)
[RESOURCES & PUBLICATIONS](#)

ITS ... technology for UNMC's future

ITS HOME

[About Us](#)
[Services](#)
[Education Technologies](#)
[Frequently called numbers](#)
[Get connected](#)
[Hardware & Software](#)
["How to" instructions](#)

IT for Researchers Users Group (RUG)

2010 sessions

[Previous sessions](#)
[Future Topics](#)
[Resource links](#)
[RUG planning committee](#)

2009 Sessions

- ADIS Research Training** - 3/5 from 9-10 a.m., 3/25 from 1-3 p.m., 4/8 from 8-10 a.m., 4/22 from 1-3 p.m. in ITS training room, 8011 Wilton. Hands-on class taught by Lori Chappier. Click [HERE](#) to register.
- ADIS Clinical Billing Administrative Training** - 3/5 from 10 a.m. - 12 p.m., 3/25 from 3-5 p.m., 4/8 from 10 a.m. - 12 p.m., 4/22 from 2-4 p.m. in ITS Training room, 8011 Wilton. Hands-on class taught by Dave Padgett. Click [HERE](#) to register.
- NIH Public Access** - 4/22 from 1:30-2:30 p.m. in DRIC1004. Presented by Robin Taylor. Session will be recorded. Click [HERE](#) to register.
- IRAMS grants EPA** - to be scheduled in May - Crystal Miller to present.
- RSS Training** - Core Facilities in June - Linda Wilkie will present - date to be determined.
- IRMS and Biology of Grant Submission** - cutting concepts to make grants more concise - to be scheduled in June. Kristen Piskano to present.

LAB MANAGEMENT

OVERVIEW

MAKING THE RIGHT MOVES

TRAINING SCIENTISTS

Partners in Scientific Management

MORE RESOURCES

Training Scientists to Make the Right Moves

These publications can help universities and professional societies develop their own programs in scientific management. Content is drawn from the experiences of HHMI and Burroughs Wellcome Fund (BWF) course organizers, representatives of the BWF-HHMI Partners in Scientific Management Program, and others with extensive experience in scientific management training.

Northeast Regional Life Sciences Core Directors Meeting

November 9-11, 2009
Cornell University
Ithaca, NY

Academic and Institutional User Groups

LAB MANAGER BOOTCAMP

COLORING OUTSIDE THE LINES®

Innovation and Creative Problem Solving

Please join Jeff Tobe and Lab Manager Magazine and start coloring outside of the lines. The presentation will be of value to all lab professionals involved in research and development for their organizations.

Lab Manager Magazine's Mini Boot Camp will be a half day session — Wednesday afternoon, March 3, 2010 in the Orange County Convention Center, Orlando, Florida.

Participants will gain the following from the presentation:

- How to spark innovative thinking in yourself and others
- How to redefine the challenges we face every day
- Motives for being more creative in your professional and personal life
- Techniques to effectively manage the change that comes with innovation
- How to tap into your creativity to challenge your existing "boundaries"

Commercial Providers



Challenges

Management

1. Centralized versus de-centralized management?
2. Reduce duplication of core facilities within an institution or region
3. Develop and implement core management systems customized for individual cores
4. Access software that can be used for core management



Centralized

Uniform Policies / Procedures
Advocacy
Promotion and Marketing
Transparency

Decentralized

Customized Operations
Independent Decision Making
•Initiation / Sunset
•Access

Management Structure Advantages

UNMC

CONTACT US | DIRECTIONS | EMPLOYMENT | DIRECTORY

Search

Information for: [Students](#) | [Faculty & Staff](#) | [Alumni](#)

UNIVERSITY OF NEBRASKA
MEDICAL CENTER

About Us | Education | Research | Outreach | Patient Care | News & Events

Home > Research > Research Core Facilities > Genomics

Genomics

Vice Chancellor for Research/Research Leadership
Centers
Major Programs
Colleges & Institutes
Research Administration Services
Research Core Facilities
Clinical Research
Cytomics
Bioimaging
Genomics
Nanomedicine
Proteomics

Cell Analysis Facility
Mutation and Methylation Analysis Facility
DNA Microarray Core Facility
Eppeley Molecular Biology (DNA Sequence, DNA Synthesis, Gene Array, siRNA Library)
Genetic Sequence Analysis
High-Throughput DNA (Sequencing/Genotyping)
Mouse Genome Engineering

Consolidate Similar and Related Technology and Services


Vital Resources for Serious Progress.

The Research Support System (RSS) brings a new level of service directly to your lab. You can schedule services, see instrument calendars and view invoices directly with the new Core Facility application available on-line through the RSS.


Participating Cores:

- Cell Analysis Facility (Flow Cytometry)
- Confocal Microscopy
- DNA Sequencing
- DNA Microarray
- Electron Microscopy
- Molecular Interaction (BIAcore)
- Monoclonal Antibody Facility
- Mass Spectrometry and Proteomics

"Don't see your core listed?"
Contact Linda Wilkie in the Office of Research to have your core participate. lwilkie@unmc.edu



University of Nebraska Medical Center



UNMC is the professional and scientific home of determined, brilliant researchers who work at the forefront of fields such as transplant medicine, cancer, neurodevelopment and genomics.

With collaboration from a highly engaged community of skilled professionals and access to [world-class facilities](#), UNMC researchers identify and focus on critical questions that lead to new knowledge and, in the long term, life-changing therapies. Breakthroughs like stem cell transplantation to treat cancer have proven critical to Nebraska, the nation and the world.

The research outlook:

- Nearly 400 research projects are underway at UNMC today, in bench science labs, translational research centers and clinical trials.
- UNMC's [research funding](#) from external sources now exceeds \$100 million annually and has resulted in the creation of more than 3,200 highly skilled jobs in the state.


Nebraska Medical Center

Office of Research

96787 Nebraska Medical Center
Omaha, NE 68198-7878
(402)559-7649
<http://www.unmc.edu/research.htm>

Research Support System

Core Facilities e-billing statements



Electronic Management Systems

•In-house



iLab save money. save time. accelerate research. [login](#) | [demo](#)

[why iLab?](#) [lab organization](#) [core facilities](#) [service overview](#) [resources](#) [company](#) [contact](#)

- Know** the status of orders, inventory
- Report** on spending in real-time
- Share** expertise and stored data
- Organize** inventory, lab samples, files
- Streamline** product research, order workflow
- Link** products, reviews, experimental data

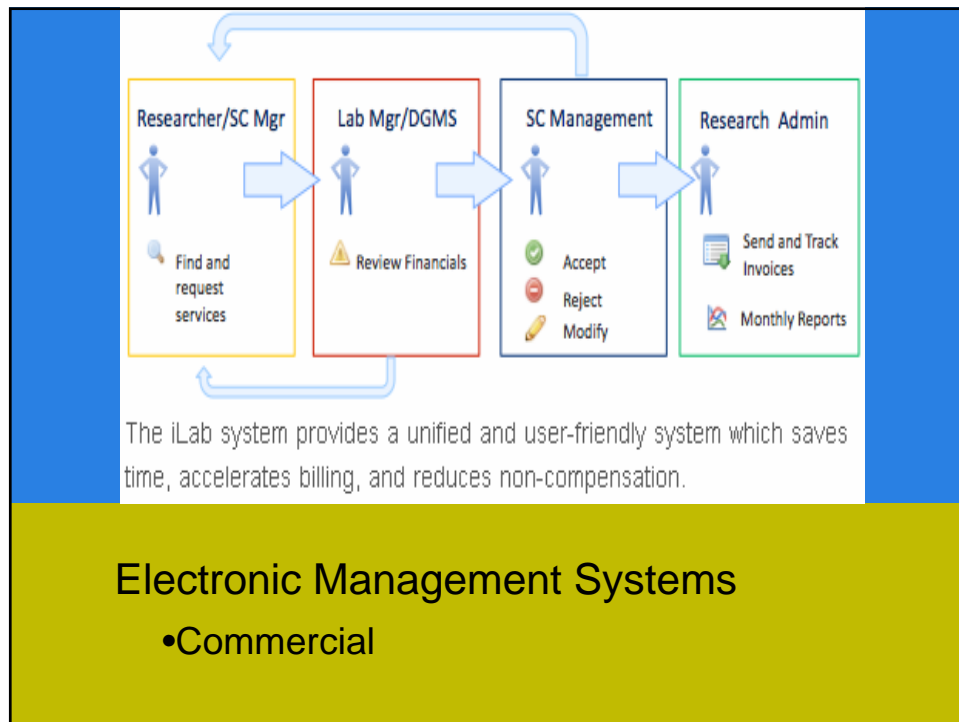
**Save money. Save time.
Accelerate research**


About iLab

iLab Solutions provides scientific organizations with unique research management and product selection tools. These tools enable researchers to share knowledge, track resources, manage budgets, and make smarter purchasing decisions. iLab's intuitive user interface drives high adoption and 98% user satisfaction. Whether integrated with existing procurement systems or with iLab's hosted catalogs and approval management tools, iLab takes research materials management beyond compliance, beyond streamlined purchasing, and beyond strategic sourcing. iLab serves 6 of the 25 largest recipients of NIH funding.

Electronic Management Systems

- Commercial




 University of Nebraska Medical Center

Challenges

Quality Improvement Activities

1. No evaluation or certification requirements
2. No technology-specific metrics to assess quality of service
3. Need for time and personnel to track and report metrics
4. Analysis of human subjects samples add increased complexity and cost
 - HIPAA-Health Information Portability and Accountability Act
 - CAP-College of American Pathologists
 - CLIA-Clinical Laboratory Improvement Amendments



UNMC CORE FACILITY EVALUATION

CHOOSE A SECTION BELOW TO VIEW THE RESULTS

CHARTS


2004

2005

2008

01. Do you conduct research?
02. Have you used any of these core facilities in the last two years?
1. Bioinformatics and Molecular Modeling
Simon Sherman, Director
2. Protein Structure
Leurey Steinle, Director
3. Confocal Microscopy
Judith Christman, Director
4. Nuclear Magnetic Resonance
Gus Wang, Director
5. Monoclonal Antibody
Don Johnson, Director
6. House Genome Engineering
Judith Stribley, Manager
7. Cell Analysis (Flow Cytometry)
Charlie Kuszynski, Director
8. Microarray
Jim Eudy, Director
9. High Throughput DNA Sequencing and Genotyping
Jim Eudy, Director
10. Mass Spectrometry and Proteomics
Pawel Ciborowski, Directors
11. Molecular Interactions (Blasore)
Don Johnson, Director
12. Bioimaging (MRI, SPECT, CT)
Mike Boska, Director
13. Nanoimaging (Atomic Force Microscopy)
Yuri Lyubchenko, Director
14. BioStatistics
Jim Lynch, Director
15. What additional research services/facilities would you like to see provided at UNMC?

Customer Surveys



University of Nebraska Medical Center

- Do you use this core?
- If yes, are you happy with the service?
- If yes, are you happy with the cost?
- If no, why? (select reason)
 - No need
 - Use an outside vendor
 - Do not know about services
- Comments

. What additional research services/facilities would you like to see provided at UNMC?

Customer Surveys



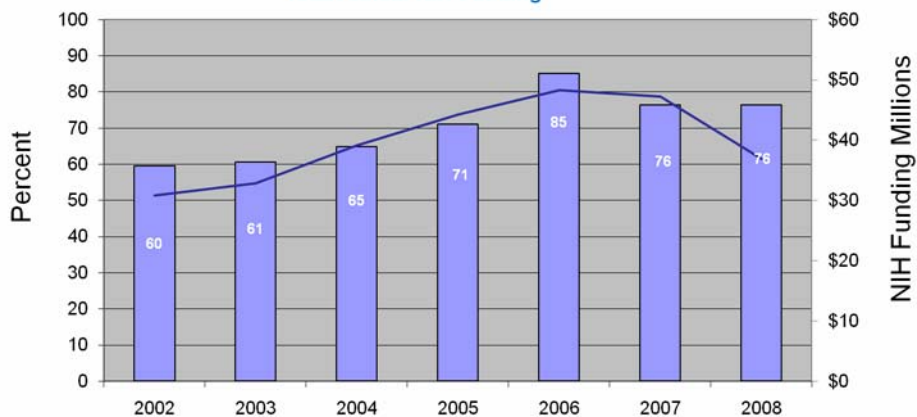
Open Research Studies

- [Glycoprotein Research Group \(gPRG\) 2010 Study](#)
- [Nucleic Acid Research Group \(NARG\) 2010 Study](#)
- [Proteome Informatics Research Group \(iPRG\) 2010 Study](#)
- [Proteomics Standards Research Group \(sPRG\) 2010 Study](#)
- [Light Microscopy \(LMRG\) 2009 Study](#)

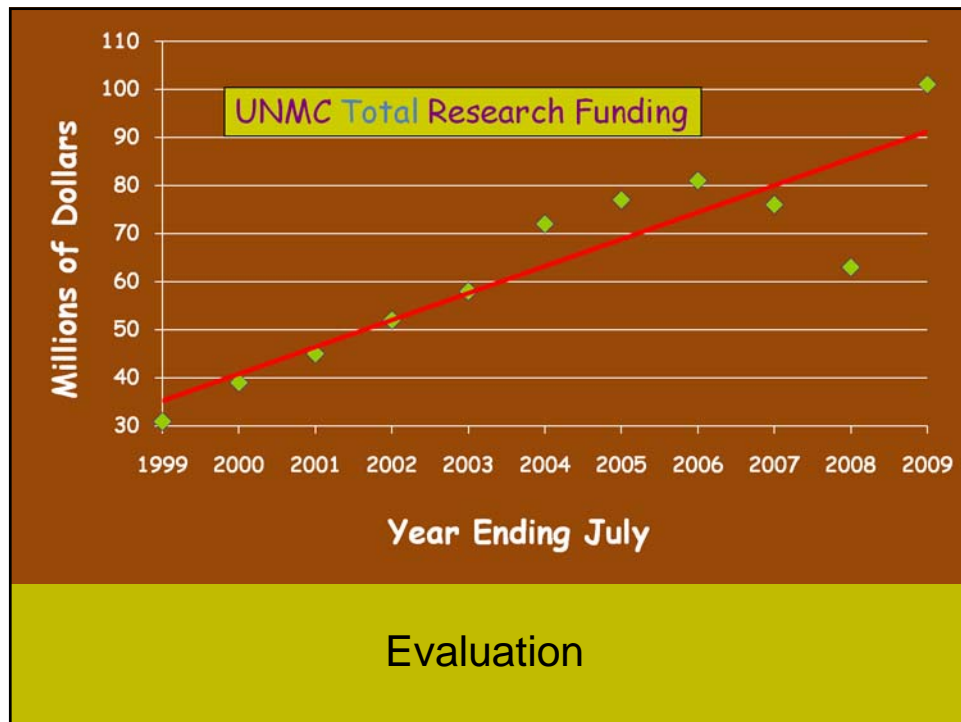
Promote and support the development and
use of standards and benchmarking




Core Facility User NIH Funding as a Percent of
Total Annual NIH Funding



Evaluation



University of Nebraska Medical Center

NIH Response

Funding Opportunity Announcements

1. Core Facility Consolidation NOT-RR-10-001
2. Develop Materials for Training Courses
3. Support a national resource directory
4. Support development of core management software

Discussions with OMB Regarding A21 Interpretation

1. Extramural grantees
2. NIH staff

Continue Dialogue with Core Resource Stakeholders



University of Nebraska Medical Center



UNIVERSITY OF
Nebraska
Medical Center